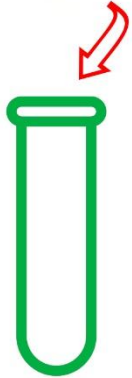


InSight AI-Cytology – Canine/Feline Pleural and Abdominal Effusion

Step 1

Pleural/Abdominal Effusion Turbidity Card

Please place the tube here



Check the clarity of
the text on the
back of the sample
tube to confirm
the sample
turbidity.



Turbid Sample Detected

Follow the operating
procedure guidelines
and select a different
sample volume.



Slightly Turbid Sample

Mix thoroughly then add
150µl.



Clear and Transparent Sample Detected

Follow the operating
procedure guidelines to
proceed.

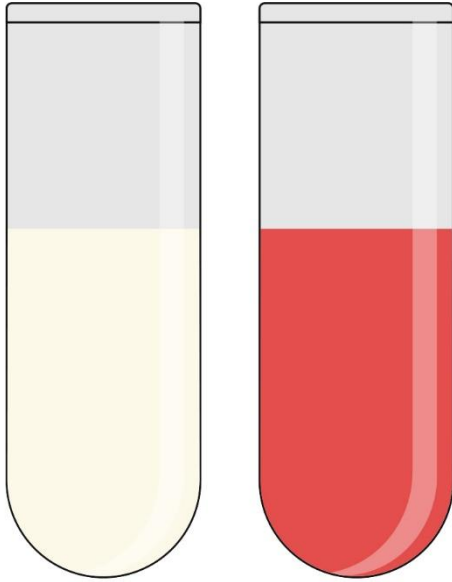
NOTE:

When the sample turbidity is between two limits, select the sample volume of the clearer turbidity for testing.

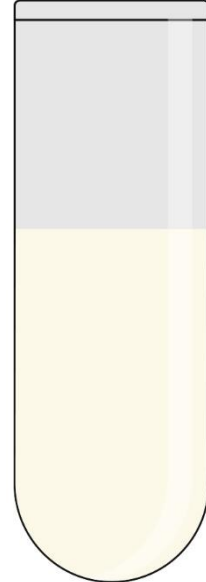
Use the button on the right to select sample
transparency and colour



Step 2

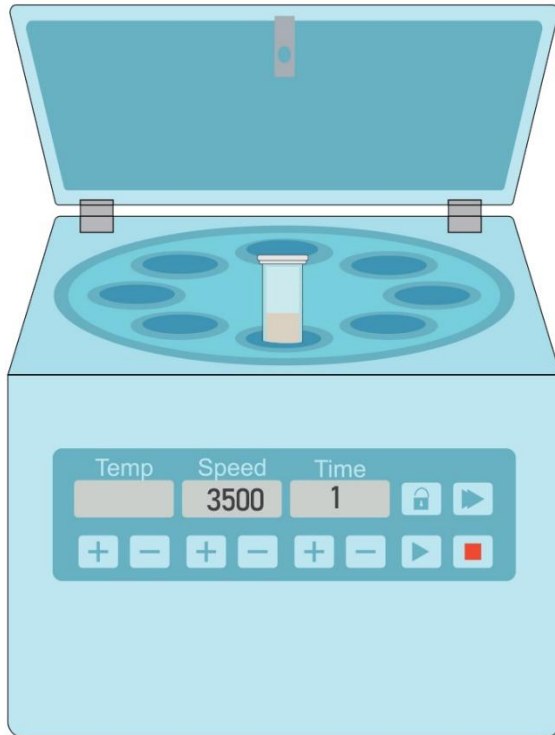


Turbid Sample



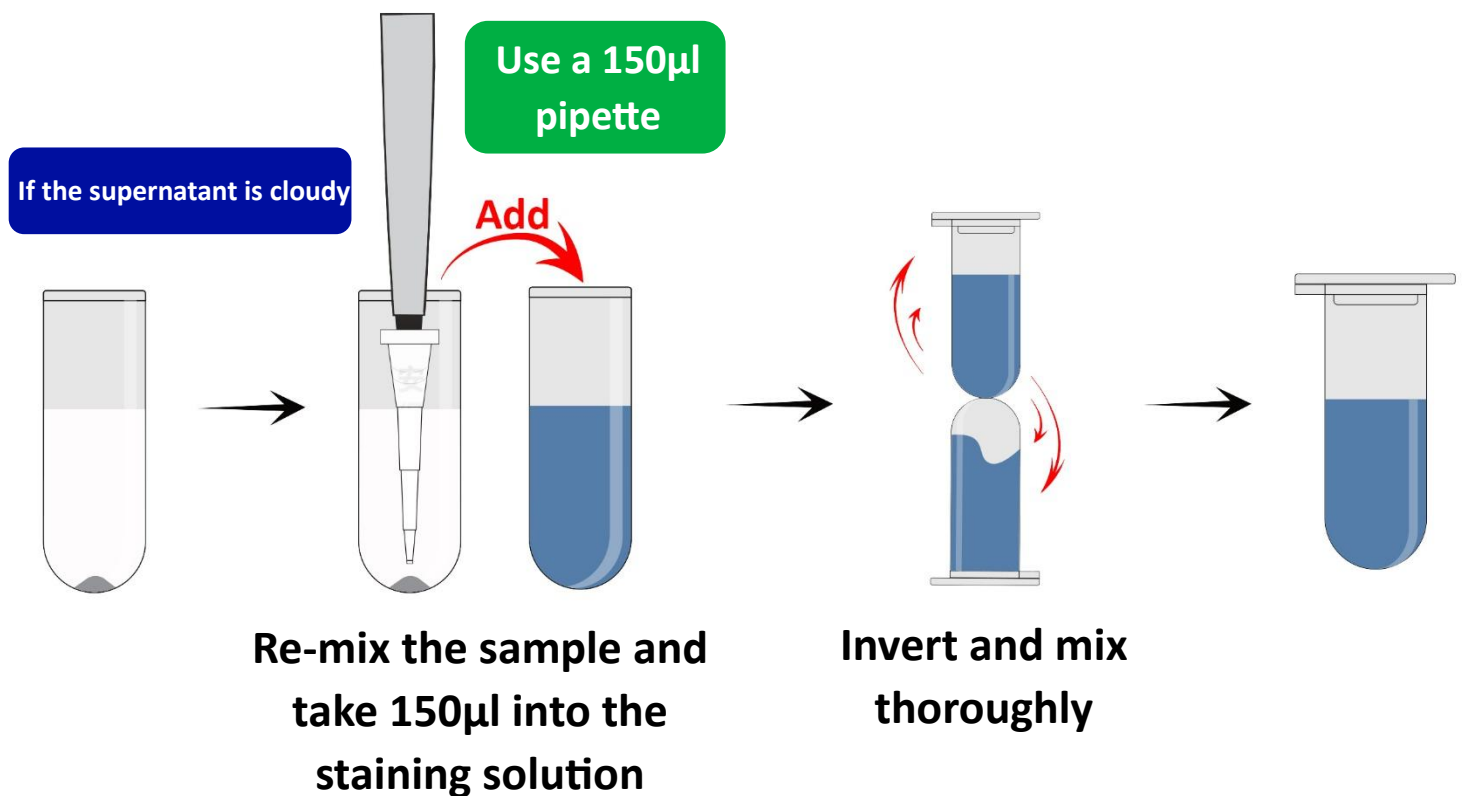
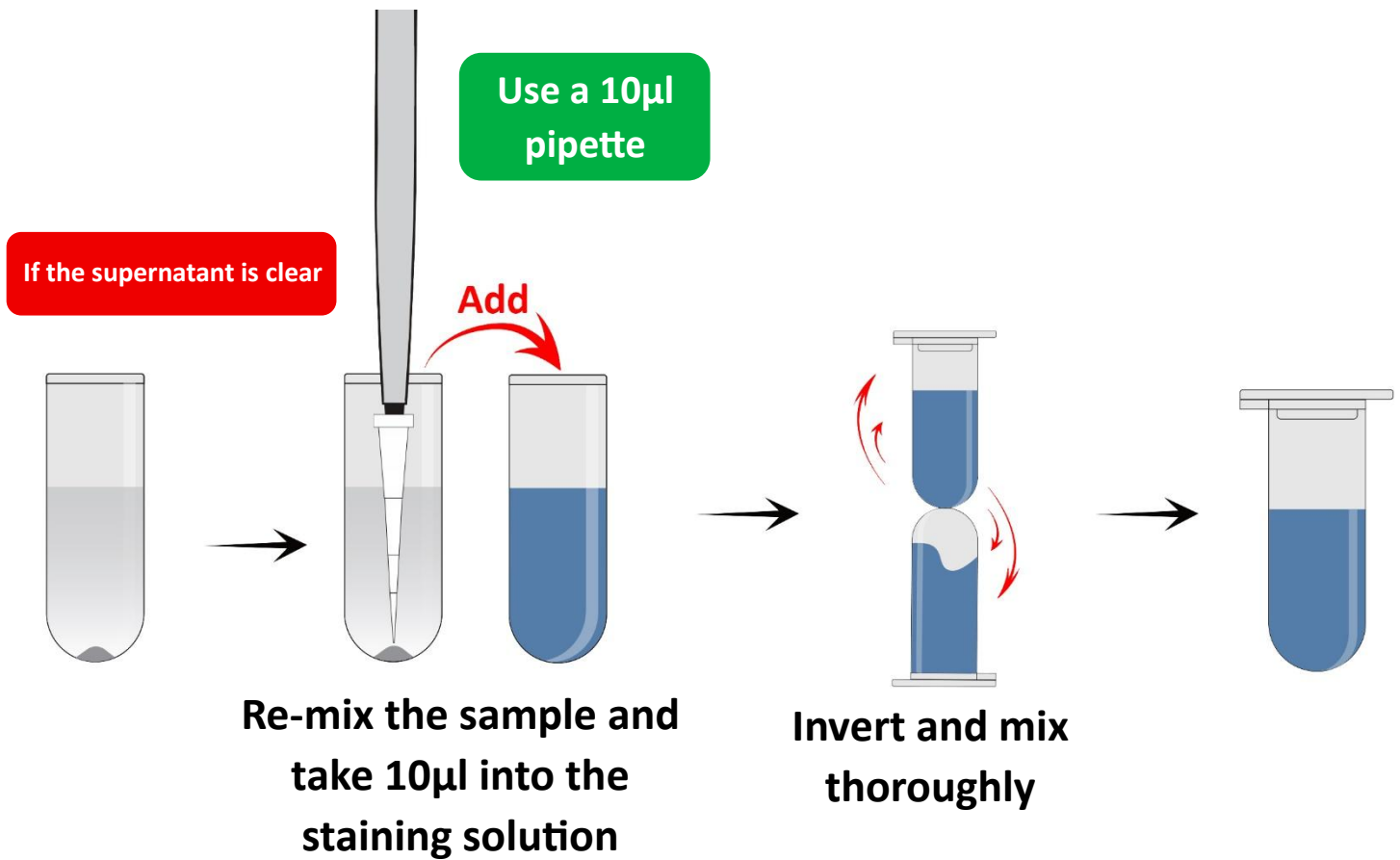
White Turbid Sample

Step 3

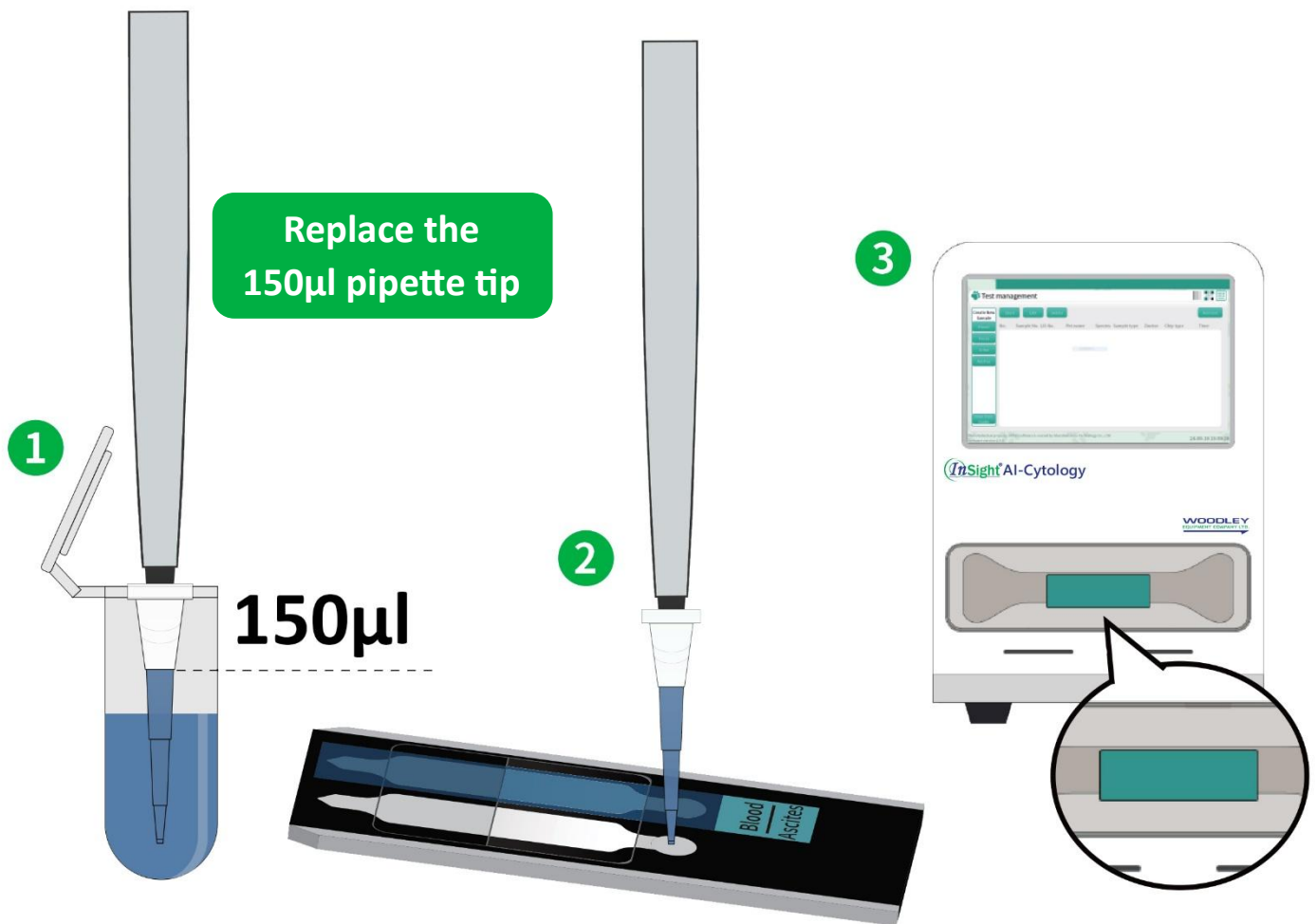


Centrifuge 2ml – 5ml at 3500 RPM for 5 minutes

Step 4



Step 5



Mix thoroughly then add 150µl into the slide for testing.

Discard the opened, used staining solution.