



InSight Equine-IA eSAA Evaluation
vs. Lifeassays

The InSight Equine-IA is an easy to use veterinary Immunoassay Analyser providing accurate and reliable results in 3-15mins. The InSight Equine-IA uses immunofluorescence technology for accurate results. A competitive binding assay is based upon the competition of labelled and unlabelled analytes for a limited number of antibody binding sites. Unbound antibodies and immunocomplexes migrate along the nitrocellulose membrane towards the test line. The unbound antibodies are then captured by antigens immobilised on the test line. The fluorescent signal intensity reflects the amount of analytes captured and is measured by the InSight Equine-IA.

Equine SAA

SAA is used as a general marker for inflammatory response.

Comparison Items

InSight Equine-IA:

Test Item – eSAA

Quantity of Samples – 25 Tests

Instrument – InSight Equine-IA Veterinary Immunoassay Analyser

Lifeassays:

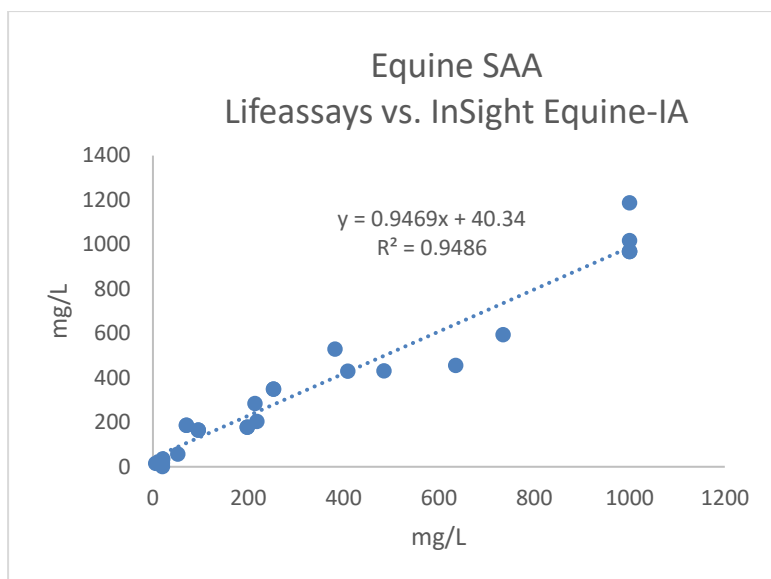
Test Item – eSAA

Quantity of Samples – 25 Tests

Test Results

Sample	InSight Equine-IA (mg/L)	Lifeassays (mg/L)	Conclusion
1	285.39	214	✓
2	2.05	20	✓
3	968.73	1000(>1000)	✓
4	204.46	218	✓
5	530.45	382	✓
6	431.21	409	✓
7	968.73	1000(>1000)	✓
8	349.14	253	✓
9	179	198	✓
10	187.12	70	✓
11	165.55	95	✓
12	968.73	1000(>1000)	✓
13	1017.45	1000(>1000)	✓
14	349.21	253	✓
15	179.09	198	✓
16	187.35	70	✓
17	165.72	95	✓
18	58	52	✓
19	17.54	20	✓
20	431.39	485	✓
21	1187.57	1000(>1000)	✓
22	594.25	735	✓

23	456.31	635	✓
24	15.46	5.61	✓
25	35.56	20.45	✓



Accuracy

eSAA		Lifeassays		
		Positive	Negative	Total
InSight Equine-IA	Positive	21	0	21
	Negative	0	4	4
	Total	21	4	25

Positive Coincidence Rate	100%
Negative Coincidence Rate	100%
Total Coincidence Rate	100%

Reference Range of eSAA in Equine Blood

Detection Range: 8~1500 mg/L

Reference Range: Normal – <20 mg/L

Each laboratory should establish a reference range that represents the fauna to be assessed.