

# InSight<sup>®</sup> Urinalysis

Veterinary Urine Analyser

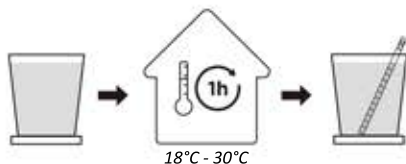
## Quick User Guide

(Refer to Operator's Manual for more information)

**WOODLEY**  
EQUIPMENT COMPANY LTD.

### 1. PREPARE FOR TEST

#### Preparations and Precautions

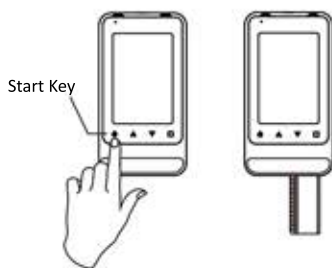


1. Samples should be tested within one hour at 18°C - 30°C.



2. Only use the InSight Urinalysis Veterinary Urine Test Strips and carefully read the product insert before use.

#### 1 Turning On



Press and hold the Start key for 3 seconds to turn the analyser on.

#### 2 Connecting Printer

(Skip if printer won't be used)

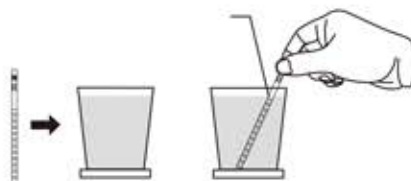


Search for the device.

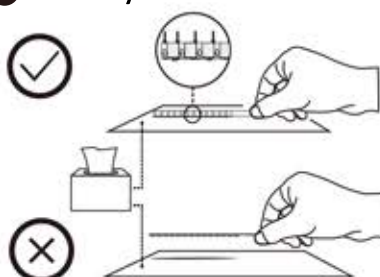
### 2. RUNNING SAMPLES

#### 3 Testing Sample

Soak all of the reagent pads on the strip.

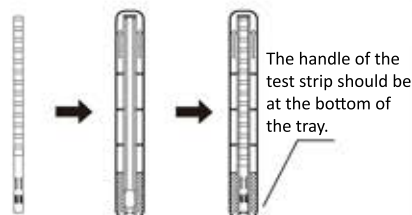


#### 4 Filter Dry



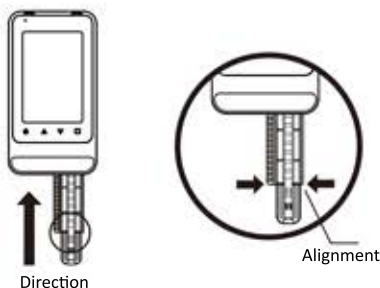
Drain excess urine from test strips.

#### 5 Put in Tray



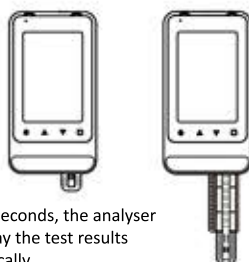
Place the test strip into the strip tray.

#### 6 Put in the Analyser



Insert the strip tray into the tray conveyor and the analyser will test automatically.

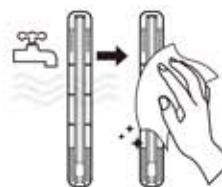
#### 7 Analysis



After 50 seconds, the analyser will display the test results automatically.

### 3. MAINTENANCE

#### 8 Cleaning

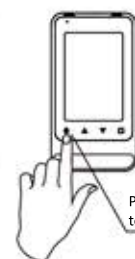


Discard used test strips, wash the strip tray with water and wipe the strip tray with an alcohol wipe.

#### 9 Maintenance and Turning Off

Press and hold to install the tray conveyor.

Press and hold to take out the conveyor.



Press and hold to turn off.

**NOTE:**

- Never pull the tray conveyor with force.

### 4. CHECK STRIP RESULTS

Semi-Quant	SI	CONV		
*Vc	+3	5.6 mmol/L	100	mg/dL
LEU	-	0 CELL/ $\mu$ L	0	leu/ $\mu$ L
MA		10 mg/L	1.0	mg/dL
*CR		26.4 mmol/L	300	mg/dL
KET	-	0 mmol/L	0	mg/dL
URO		Normal $\mu$ mol/L		Normal
BIL	-	0 $\mu$ mol/L	0	mg/dL
GLU	-	0 mmol/L	0	mg/dL
PRO	-	0 g/L	0	mg/dL
SG		1.060	1.060	
pH		5.0	5.0	
BLD	-	0 CELL/ $\mu$ L	0	mg/dL
*Ca		1.0 mmol/L	4.0	mg/dL
ACR	Norm	<3.4 mg/mmol	<30	mg/g
PCR	Norm	<17.0 mg/mmol	<150	mg/g



**Precautions:**

The check strip does not need to be soaked. If the result is consistent with the above table, the analyser is ok to use.

**Woodley Equipment Company Ltd.**  
Old Station Park Buildings, St. John Street,  
Horwich, Bolton, BL6 7NY, UK  
Tel: +44 (0) 1204 669033  
Email: sales@woodleyequipment.com  
Web: www.woodleyequipment.com