

July 2025

In this edition of **The Woodley InSight**, we focus on existing analysers which are introducing new, improved features and testing capabilities.

1. **Bionote Vcheck F** - Immunoassay with new assays available and in development
2. **InSight V-EL** - For expanded electrolyte analysis
3. **InSight qLabs Plus** - For additional features and introduction of fibrinogen testing
4. **InSight V5R** - For robust haematology with reticulocytes
5. **InSight Equine-IA** - For focussed equine immunoassay in a handheld device
6. **InSight Urinalysis** - With added parameters and Wi-Fi Bluetooth connectivity
7. **InSight Keto Vet** - Our latest handheld meter for fast, accurate blood ketone results
8. **InSight AI-Cytology** - Our 7 part differential haematology analyser featuring Blood, Faecal and Urine Sediment testing on one device

See the rear page for a 360 Degree Approach to Laboratory Service Delivery and our Long Term Strategic Alliance with NationWide Laboratories.

WOODLEY
EQUIPMENT COMPANY LTD.

Exclusive UK Veterinary Distributors of
MEDCAPTAIN and Penlon Anaesthesia Systems

J.A.K Marketing Ltd



+44 (0) 1204 669033 (Option 1)



sales@woodleyequipment.com



www.woodleyequipment.com



1



2



3



4



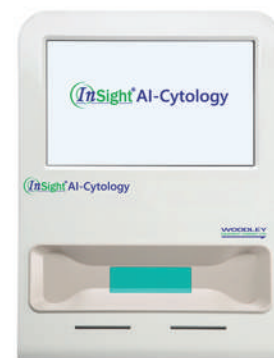
5



6



7



8

WOODLEY
EQUIPMENT COMPANY LTD.

"PASSIONATE ABOUT LABORATORY DIAGNOSTICS"



Vcheck F (V200) Immunofluorescence Analyser

Canine Tests:

- cPL
- T4
- TSH
- Cortisol
- CRP
- Progesterone
- D-Dimer
- NT-proBNP
- Troponin I
- SDMA
- Antibody Titre Testing For:
Parvovirus, Distemper & Hepatitis

Feline Tests:

- T4
- fPL
- SAA
- NT-proBNP
- Troponin I
- SDMA
- Antibody Titre Testing For:
Calicivirus, Herpes
& Parvovirus

Equine Tests:

- Progesterone
- SAA
- Foal IgG



Scan QR Code for more
product information
and resources



**SDMA TESTS
NOW AVAILABLE**

**LOW COST, IN-PRACTICE,
REFERENCE LAB QUALITY
IMMUNOASSAY TESTING**

InSight® V-EL Veterinary Electrolyte Analyser

InSight V-EL is a whole blood Veterinary Electrolyte Analyser that requires zero maintenance and can test 5 electrolytes on 1 single-use cartridge.

**5 ELECTROLYTES
ON 1 CARTRIDGE**

K⁺, Na⁺, Cl⁻, iCa²⁺, iMg²⁺



Scan QR Code for more
product information
and resources



InSight® qLabs® PLUS Veterinary Coagulation Analyser

The InSight qLabs Plus Veterinary Coagulation Analyser is calibrated and validated specifically for use in cats and dogs, and allows veterinary practices to carry out point of care coagulation testing in-practice.

**COAGULATION SCREEN,
ONE DROP WHOLE BLOOD.
NOW WITH FIBRINOGEN TEST**



Scan QR Code for more
product information
and resources



Easily Connect to
eStation to Charge
and Print

InSight V5®R Veterinary Haematology Analyser

Parameters

WBC	LYM#	HGB	HCT	Retic#
NEU%	EOS%	MCV	PLT	Retic%
NEU#	EOS#	MCH	MPV	
MON%	BASO%	MCHC	PDW	
MON#	BASO#	RDW-CV	PCT	
LYM%	RBC	RDW-SD		

**A fully automated,
multi-species,
5 Part Differential
Haematology
Analyser with
Reticulocytes**



Scan QR Code for more
product information
and resources



**5 PART DIFFERENTIAL
WITH LASER TECHNOLOGY**

**Do you need reticulocyte analysis?
Save on reagents for each sample**

InSight® Equine-IA

Handheld Equine Immunoassay Analyser

The InSight Equine-IA is a portable, easy to use, handheld Equine Immunoassay Analyser providing quick, accurate and reliable results.

LOW COST, PORTABLE

EQUINE IMMUNOASSAY TESTING

eACTH, eSAA, eProg, Foal IgG, Insulin

Tests Available

- Equine ACTH
- Equine SAA
- Equine Progesterone
- Foal IgG
- Equine Insulin



Scan QR Code for more product information and resources

InSight® Urinalysis

Handheld Veterinary Urine Analyser & Test Strips

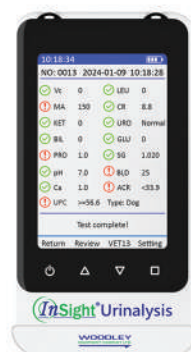
InSight Urinalysis is an easy to use, handheld Veterinary Urine Analyser that provides fast, accurate results and can test up to 13 parameters on one test strip.

Parameters

- Leucocytes
- Ketone
- Urobilinogen
- Bilirubin
- Glucose
- Protein
- Specific Gravity
- pH
- Blood
- Ascorbic Acid
- Microalbumin
- Calcium
- Creatinine

With Urine Protein/Creatinine Ratio & Microalbumin/Creatinine Ratio

13 PARAMETERS ON ONE TEST STRIP
UPC RATIO ON EACH TEST



Scan QR Code for more product information and resources

InSight® Keto Vet Veterinary Ketone Meter

InSight Keto Vet provides accurate, quantitative BHB results, the gold standard, for the early detection of subclinical ketosis in dairy cattle and diabetic ketoacidosis in companion animals.

ACCURATE, QUANTITATIVE BLOOD KETONE RESULTS IN 10 SECONDS



Scan QR Code for more product information and resources

InSight® AI-Cytology Veterinary Haematology Analyser with Morphology

7-Part Differential Analyser providing full blood count with retics, NRBC and cell morphology analysis using AI technology

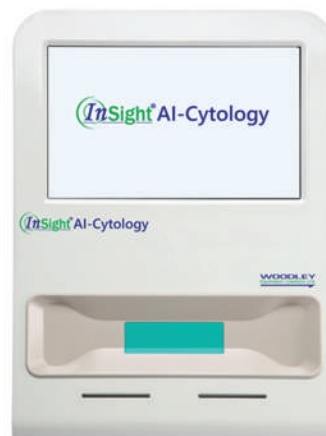
Displays cells as real time conventional images

InSight AI-Cytology is designed for automated, comprehensive testing of blood, faecal & urine sediment samples across various species, including small mammals and reptiles.

An integrated solution for morphological examinations in veterinary laboratories.

BLOOD, FAECAL & URINE SEDIMENT TESTING ON ONE DEVICE

Online remote assistance directly to your analyser



Scan QR Code for more product information and resources

360 Degree Approach to Laboratory Service Delivery with NationWide Laboratories and Woodley Equipment Company

NationWide Laboratories' strategic alliance with Woodley Equipment Company gives you access to in-clinic equipment, alongside reference laboratory and pathology support.

Woodley Equipment Company was **established in 1989** and prides itself on being a market leading supplier of specialist **laboratory equipment, diagnostic and critical care** products to the **veterinary industry worldwide**.

A dedicated on-the road Account Manager team provides **in-practice support**, training and ongoing advice. This team is supported at our headquarters with a technical support and service department staffed with **Biomedical Scientists** and **Service Engineers** who deliver proven high quality after-sales care.



InSight® Analysis

with



NationWide
LABORATORIES

Reference Laboratory Services



All your laboratory needs in one 'Complete' System for one low cost payment each month

- **Includes** InSight® p-LINK to facilitate connectivity & results integration with Practice Management systems
- **Includes** Technical Support for 5 years
- **Includes** all repairs & servicing for 5 years
- **Includes** scheduled internal QC

**Upgrade your Woodley rental contract
with a NationWide Laboratories
5 year provision of services**

WOODLEY
EQUIPMENT COMPANY LTD.

Tel: +44 (0) 1204 669033 (Option 1)
Email: sales@woodleyequipment.com
Web: www.woodleyequipment.com

"PASSIONATE ABOUT LABORATORY DIAGNOSTICS"